

FUJITSU Cloud Service S5 Setup and Configuration of the FTP Service under Windows 2008 Server

This guide details steps required to install and configure a basic Windows 2008 FTP server on the FUJITSU Cloud Service S5.

Assumptions

- User Account, Certificate and connectivity to the FUJITSU Cloud Service S5
- No current Active Directory (AD) configured
- Familiarity with the FUJITSU Cloud Service S5 Portal basic configuration and administration tasks
- Familiarity with the FUJITSU Cloud Service S5 Portal System Manager and Design Studio
- User Accounts exist for FTP users

Basic Windows 2008 Server creation and configuration

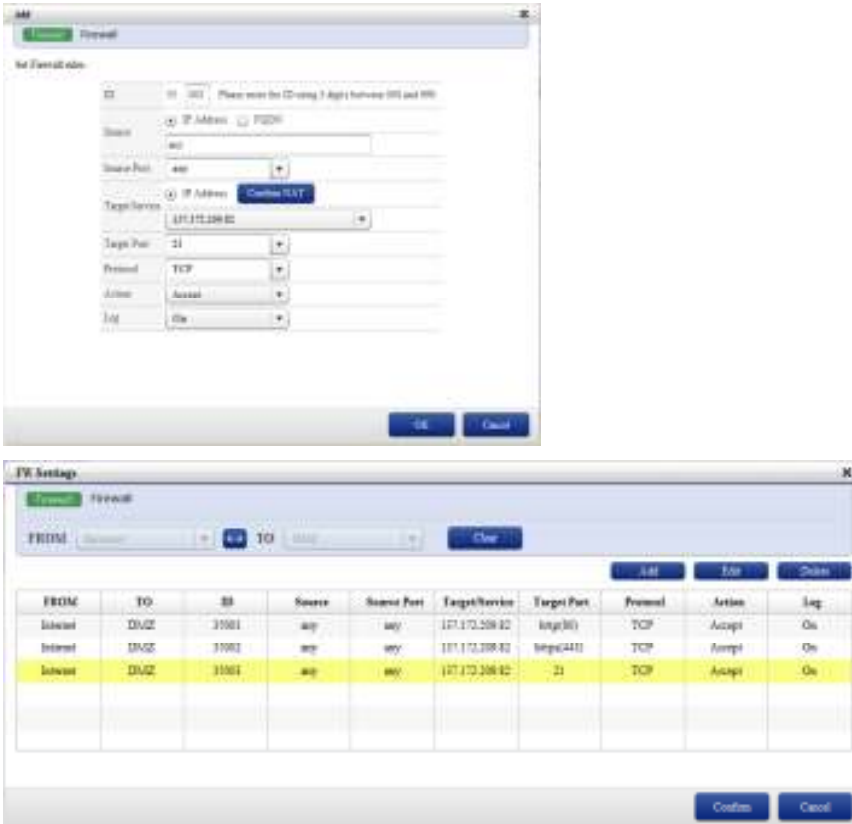
1. From within FUJITSU Cloud Service S5 Design Studio:
2. Create an Economy Windows 2008R2SE Server in the vSYS DMZ
3. Once deployed, Start the Server and note the following:
Private IP Address e.g. 172.16.18.12
Initial PW e.g. D3WoBjuk
4. Establish a VPN Connection to the DMZ Network
5. Confirm the Certificate when prompted
6. Select "Continue to this website (not recommended)."
7. Enter VPN Login Credentials
8. Establish a Remote Desktop Connection (RDP) client connection with the Server e.g. 172.16.18.12
9. Login as Administrator with the Initial PW e.g. bV8t3rzj
10. Start → Control Panel → Network and Internet → Network and Sharing Center → Local Area Connection → Properties
11. Select Internet Protocol version 4 (TCP/IPv4) → Properties
12. Set the DNS Server Address e.g. 137.172.209.9
13. Select OK → OK → Close

Firewall Configuration for the FTP service

1. Configure Internet connectivity for the Vsys and note the Public IP Address, e.g. 137.172.209.82



2. Create a FW Settings entry as highlighted below for the FTP service on Port 21 (Target IP= Public IP address)



Installing FTP Server on Windows Server 2008

1. Start → Control Panel → Turn Windows Features on or off
2. Select Roles → Add Roles → Next
3. Select Web Server (IIS) → Next → Next → Next → Install → Close
4. Select Start → Control Panel → Turn Windows Features on or off
5. Highlight Roles → Web Server (IIS) → Add Role Services (left pane)
6. Select FTP Server:



7. Select Next → Install → Close to complete the installation of the FTP service.

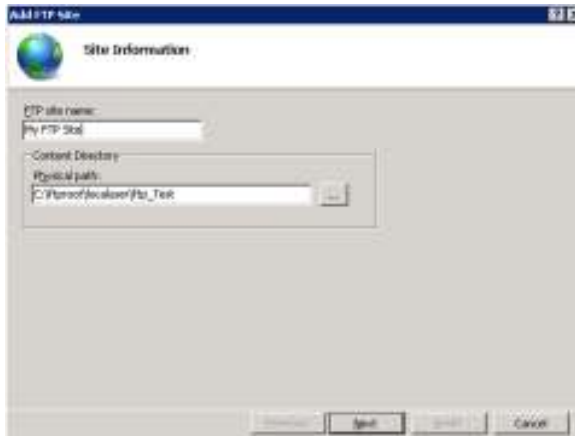
Configuring FTP on Windows Server 2008

In order to use FTP in "Isolation" mode, we need to construct the FTP Root so that users are "Dropped" into their correct home directory.

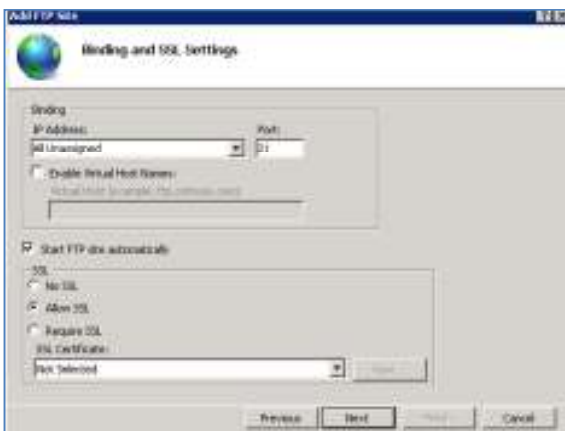
1. Create an FTP folder structure as shown below:



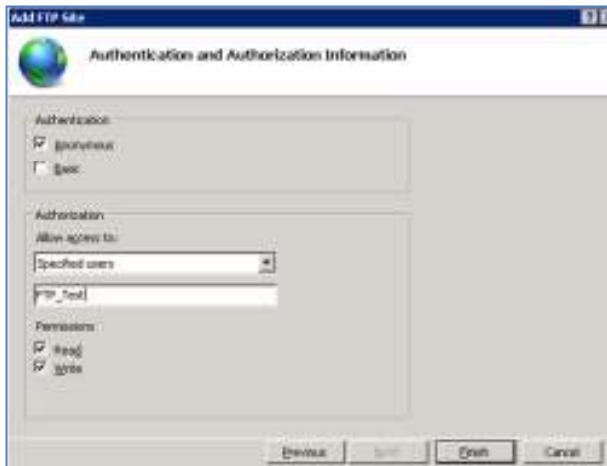
2. Select **Start** → **Administrative Tools** → **Internet Information Services(IIS) Manager**
3. Right click on the Web Server name and Select **Switch to Content View**
4. Select **Add FTP Site** (Right pane)
5. Enter a name for the FTP Site and specify the Physical Path to the Content Directory, for example:



6. Select **Next** and modify the following screen as appropriate:



7. Select **Next** and then enter the Authentication and Authorization details as show in the example below:



8. Select **Finish**

The FTP Service and Test User creation is now complete for the system and ready to test from a client command line FTP session.