

FUJITSU Cloud Service S5

Basic System Setup – Windows VM

This guide documents the basic configuration that should be performed to a vSYS and VM to employ the standard FUJITSU Cloud Service S5 services such as DNS, Internet Access, reference time server and Windows Updates and activation (2008).

To use these services, a vSYS must be configured to connect to the Internet, have at least one Global IP address, and have Network Address Translation configured.

NOTE: NATing is only required to one server, with all other servers across subnets able to take advantage of these services as a result of the one NAT rule.

Adding an Internet Connection to a vSYS

Perform the following if an Internet Connection was not specified at the point of creation:

1. Within System Details screen, click the 'Reconfigure' button and then select anywhere within the vSYS (shown in red below).

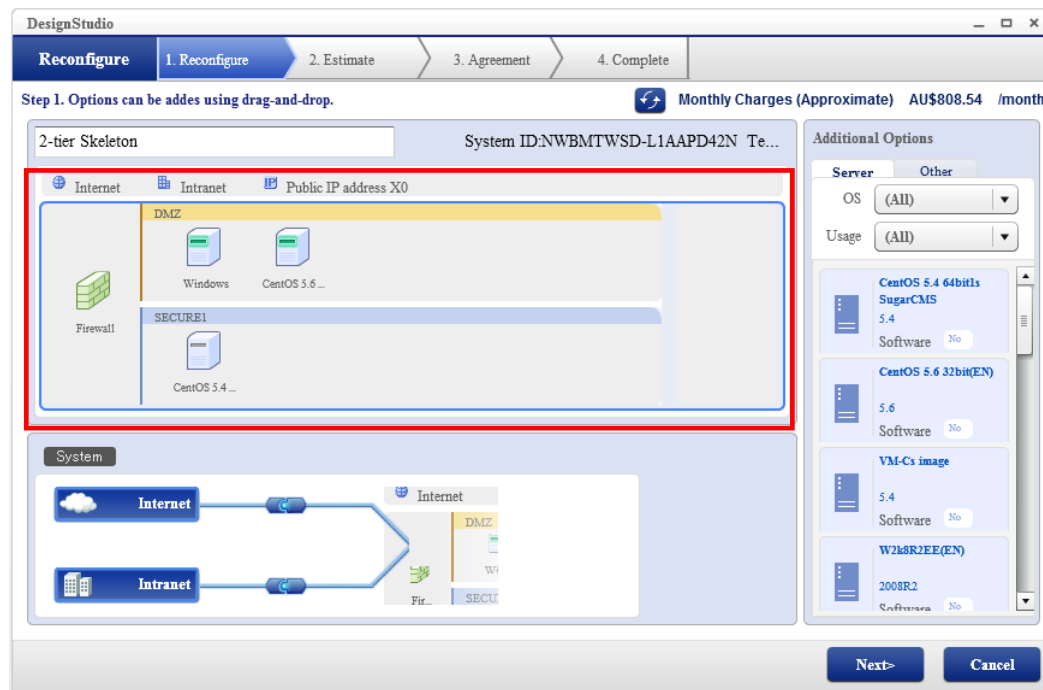


Figure 1 - Adding an Internet Connection to a vSYS

2. Click on the disconnected Internet link to connect it (shown in connected state above) and click 'Next'.
3. Review the order, and click 'Next' to confirm the details.
4. Review the terms of conditions, then tick the 'I agree to the Terms of Service' tick box and click the 'Final Confirmation' button to the right of the screen.
5. Click 'Open System Manager' button to return to the previous System Details screen.

Adding a Global IP Address to a vSYS

Perform the following if a Global IP address was not specified at the point of vSYS creation:

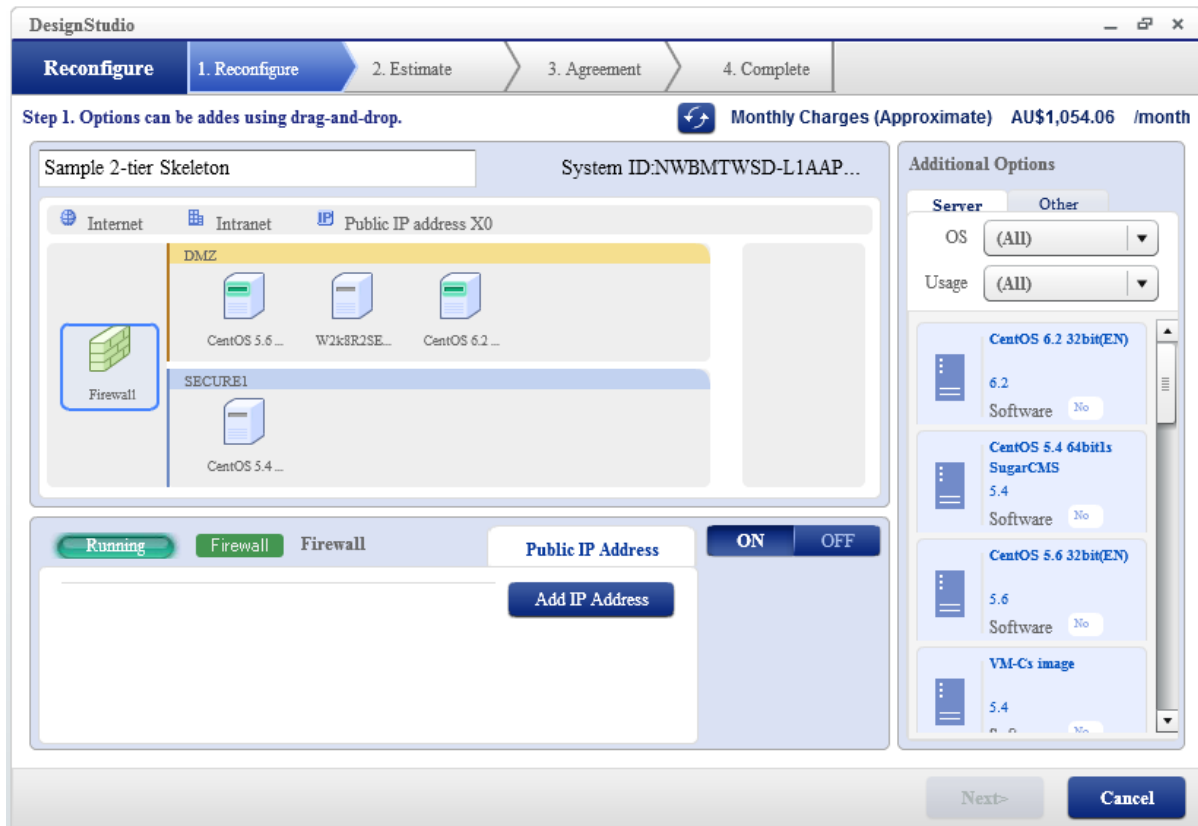


Figure 2 – Adding a Global IP Address to a vSYS

1. Open 'System Manager', locate and double click the required vSYS.
2. Within the resulting 'System Details' menu, click the 'Reconfigure' button.
3. Click to highlight the 'Firewall' graphic and then click 'Add IP Address' and then 'Next'.
4. Review the order, and click 'Next' to confirm the details.
5. Review the terms of conditions, then tick the 'I agree to the Terms of Service' tick box and click the 'Final Confirmation' button to the right of the screen.
6. Click 'Open System Manager' button to return to the previous System Details screen.

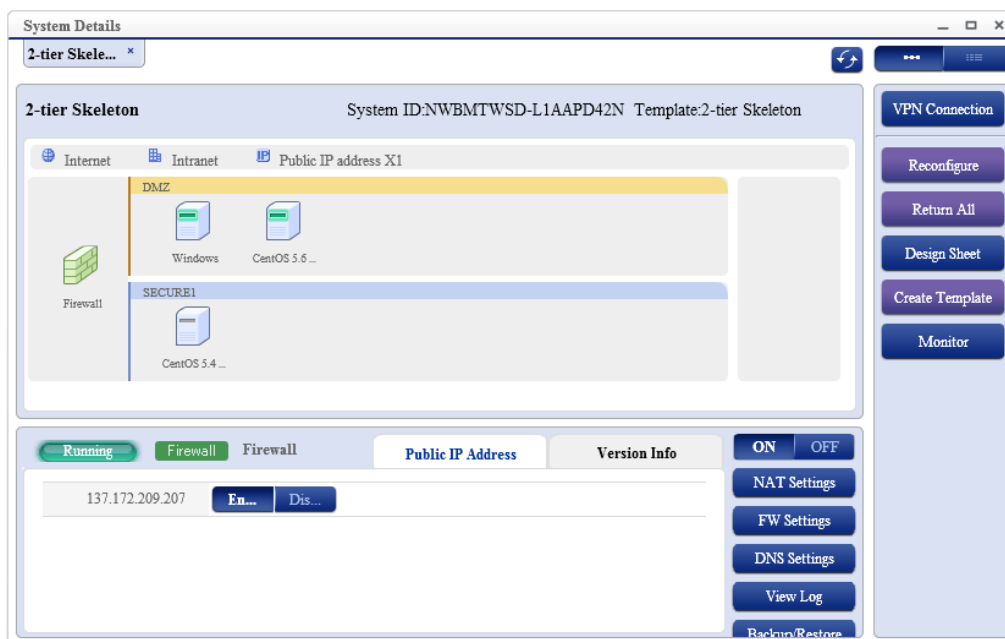


Figure 3 - Enabling a Global IP Address

7. The recently added Global IP address will be created as disabled. Click 'Enable', 'Yes' & 'Ok' to make it active.
8. Click the refresh icon (anticlockwise arrows), after several minutes the 'Enable' button will turn white when the process is complete, as shown above.

Configuring Global IP Address Network Address Translation

1. Within the 'System Details' screen, click the 'NAT settings' button
2. In the drop down box under DNAT and SNAPT configure the server to be associated with the Global IP address and click 'OK'

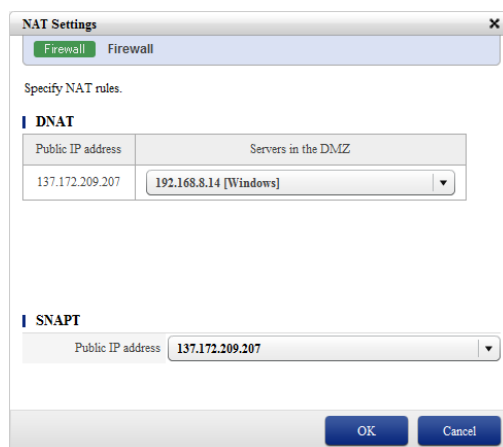


Figure 4 – NAT Configuration

3. Click 'OK', 'Yes' to confirm and implement the change
4. Click 'Ok' when change is complete.

Configuring Firewall Rules

This section deals with the creation of the firewall rules only. See subsequent sections for additional specific VM configuration required in order to take advantage of each service.

The below screenshot shows the default firewall rules that should be created to allow DNS, WSUS, NTP, Internet access (HTTP/HTTPS) and KMS Activations (if using a 2008 Server)

FROM	TO	ID	Source	Source Port	Target/Service	Target Port	Protocol	Action	Log
DMZ	Internet	45100	any	any	DNS	---	---	Accept	Off
DMZ	Internet	45110	any	any	WSUS	---	---	Accept	Off
DMZ	Internet	45120	any	any	NTP	---	---	Accept	Off
DMZ	Internet	45130	any	any	any	https(443)	TCP	Accept	Off
DMZ	Internet	45134	any	any	any	http(80)	TCP	Accept	Off
DMZ	Internet	45140	any	any	KMS	---	---	Accept	Off

Figure 5 – Standard Firewall Rules

1. Within the 'System Details' screen, click 'FW Settings' button.
2. In the FROM drop down box select 'DMZ' and 'Internet' in TO dropdown box.
3. Click 'Refine Search' then click 'Add'.
4. Create a rule for each of the services required, using the below table as a guide. Clicking 'OK' to complete a rule.
5. When all rules are added, click 'Confirm', answer 'Yes' to fix the firewalls and 'OK' when complete.
6. Click 'Cancel' to close 'FW Settings' menu.

Set Firewall rules.

ID: 45 100 Please enter the ID using 3 digits between 000 and 999.

Source: IP Address, any

Source Port: any

Service: DNS

Target/Service: IP Address, FQDN, FQDN (HTTP access to a destination with a dynamic IP address, such as Windows Update), ---

Target Port: ---

Protocol: ---

Action: Accept

Log: Off

OK Cancel

Figure 6 DNS – Firewall Rule to allow connection to FUJITSU Cloud Service S5 DNS Service

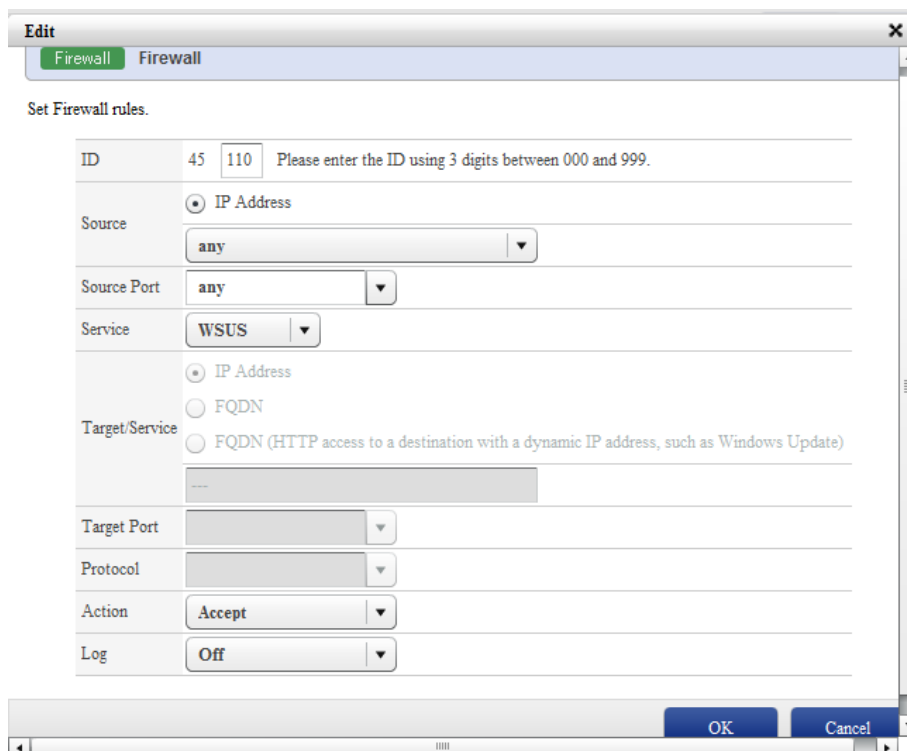


Figure 7 WSUS - Firewall Rule to allow connection to FUJITSU Cloud Service S5 WSUS Service

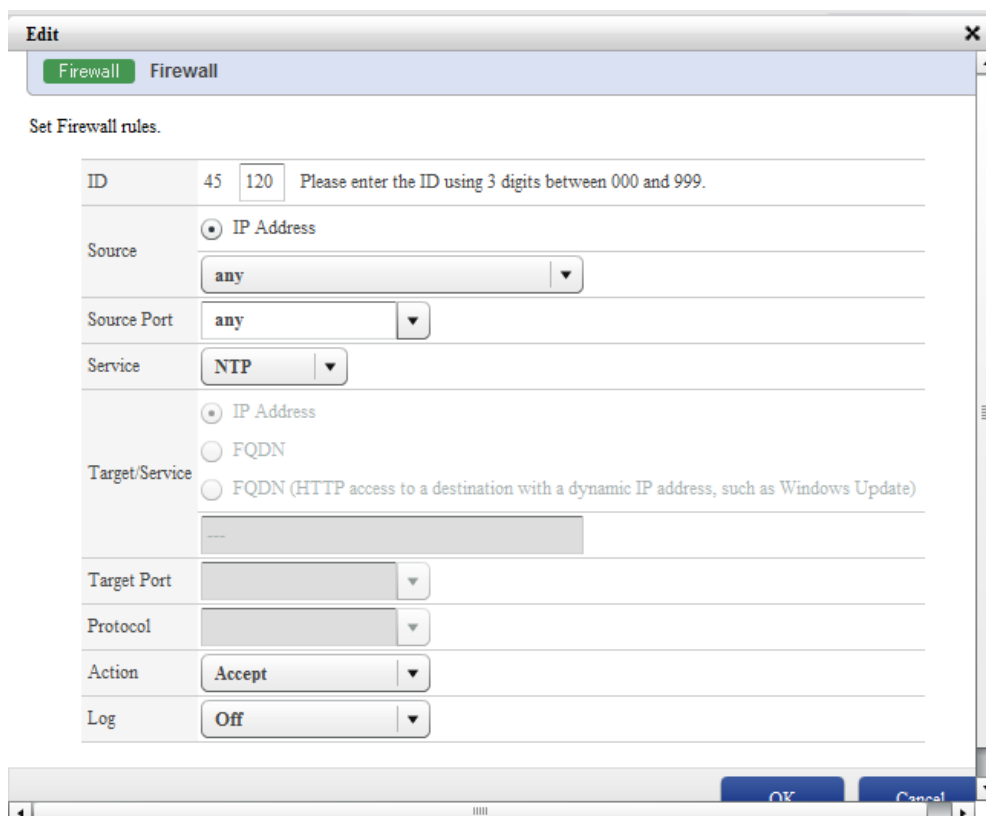


Figure 8 NTP - Firewall Rule to allow connection to FUJITSU Cloud Service S5 NTP Service

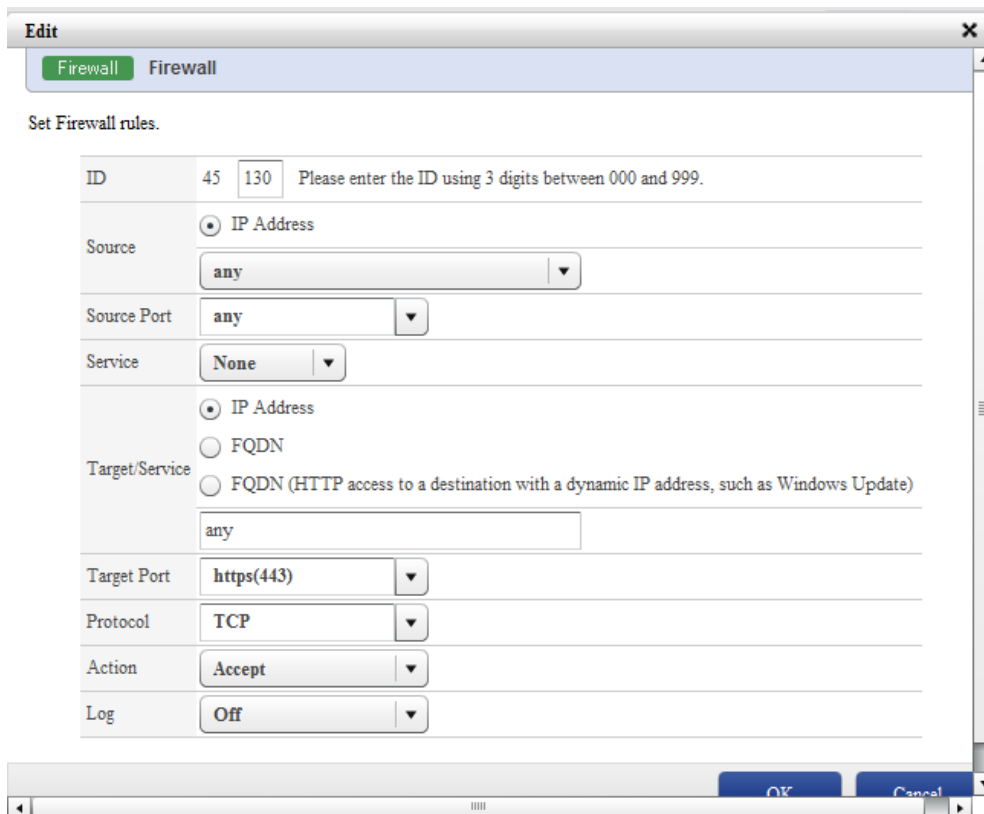


Figure 9 HTTPS - Firewall Rule to allow vSYS to connect to the Internet over HTTPS

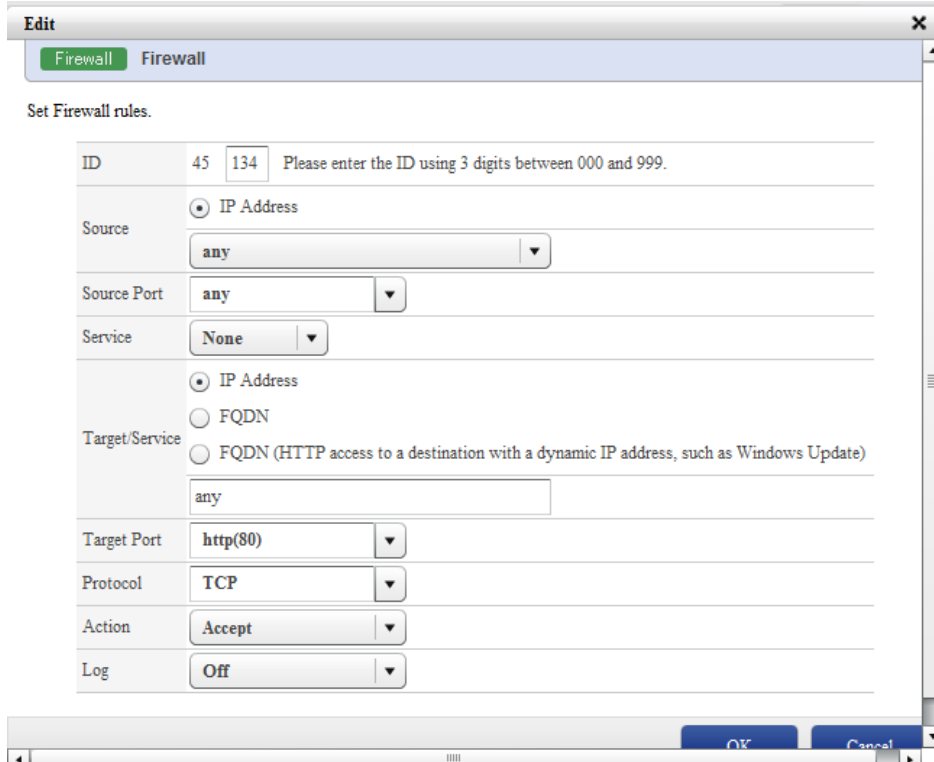


Figure 10 - HTTP - Firewall Rule to allow vSYS to connect to the Internet over HTTP

Set Firewall rules.

ID	45	140	Please enter the ID using 3 digits between 000 and 999.
Source	<input checked="" type="radio"/> IP Address <input type="radio"/> FQDN <input type="radio"/> FQDN (HTTP access to a destination with a dynamic IP address, such as Windows Update)		
Source Port	any		
Service	KMS		
Target/Service	<input checked="" type="radio"/> IP Address <input type="radio"/> FQDN <input type="radio"/> FQDN (HTTP access to a destination with a dynamic IP address, such as Windows Update)		
Target Port			
Protocol			
Action	Accept		
Log	Off		

Figure 11 KMS - Firewall Rules to allow 2008 vSYS to activate via FCGP KMS Service

Configure a VM to use a DNS Server

1. Within System Details, select the required VM and if not powered on, click 'On'.
2. Once the VM is shown in Green, click 'VPN Connection' button and establish a VPN connection the network segment containing the server. (The process for this is outside the scope of the guide.)

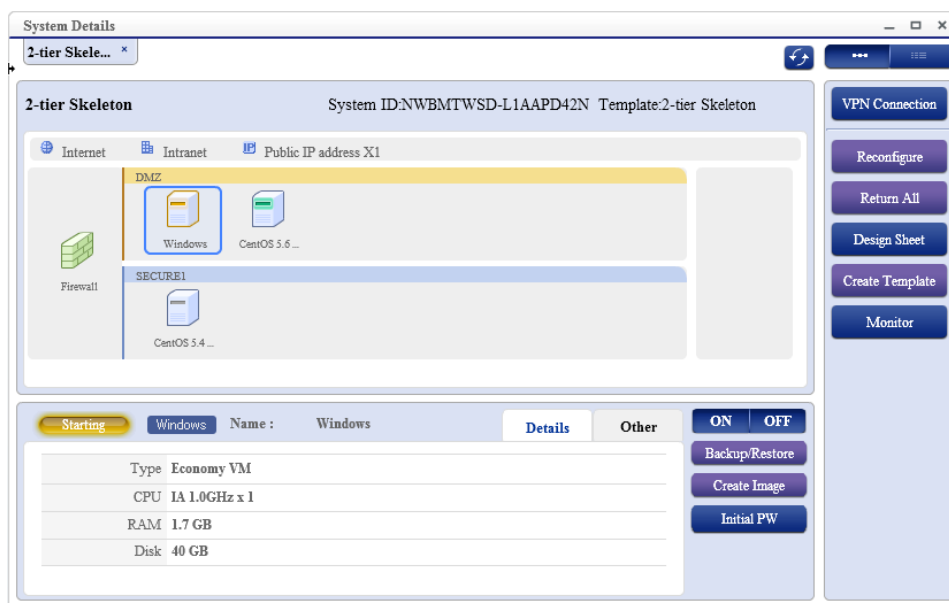


Figure 12 – System Details screen showing a VM starting up

3. Note the assigned IP address from the 'Other' tab and default password for the 'administrator' account by clicking the 'Initial PW' button.
4. Connect to the server using MSTSC or other remote desktop software and login using credentials from step 3.
5. Enter 'Network and Sharing Centre' in the search box and select it in returned results. Under 'View your active networks' select 'Local Area Connection', then 'Properties'.

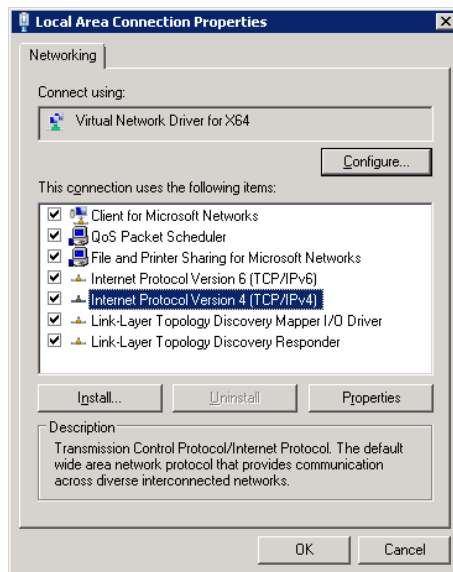


Figure 13 – Local Area Connection Properties

6. Highlight 'Internet Protocol Version 4(TCP/IPv4)' and select Properties
7. Select the 'Use the following DNS Server Addresses:' radio button and entered the IP address of the FUJITSU Cloud Service S5 DNS server (137.172.209.9) or one of your own:

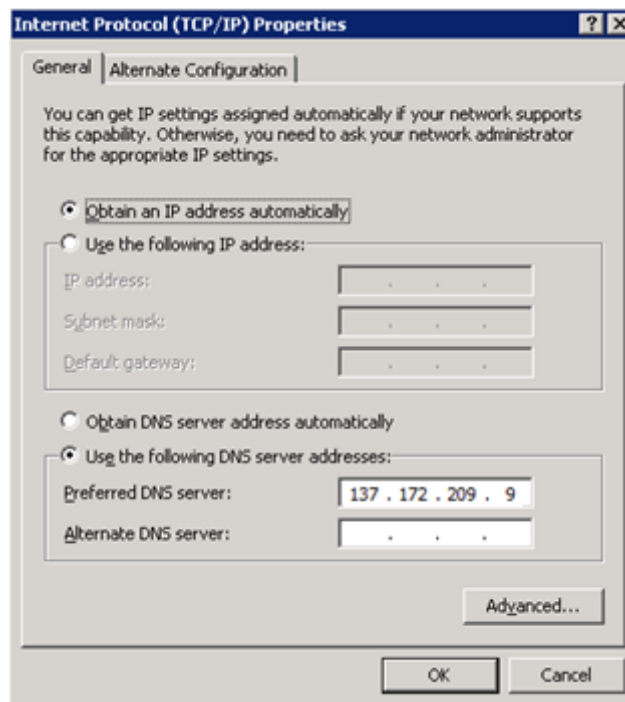


Figure 13 – Specifying DNS Server

8. Click 'OK', 'OK' and close 'Network Connections' window.

WSUS

Before Configuring WSUS on a 2008 server, perform the KMS section first.

1. Enter 'GPEDIT.MSC in 'Search Programs and Files' (2008) box.

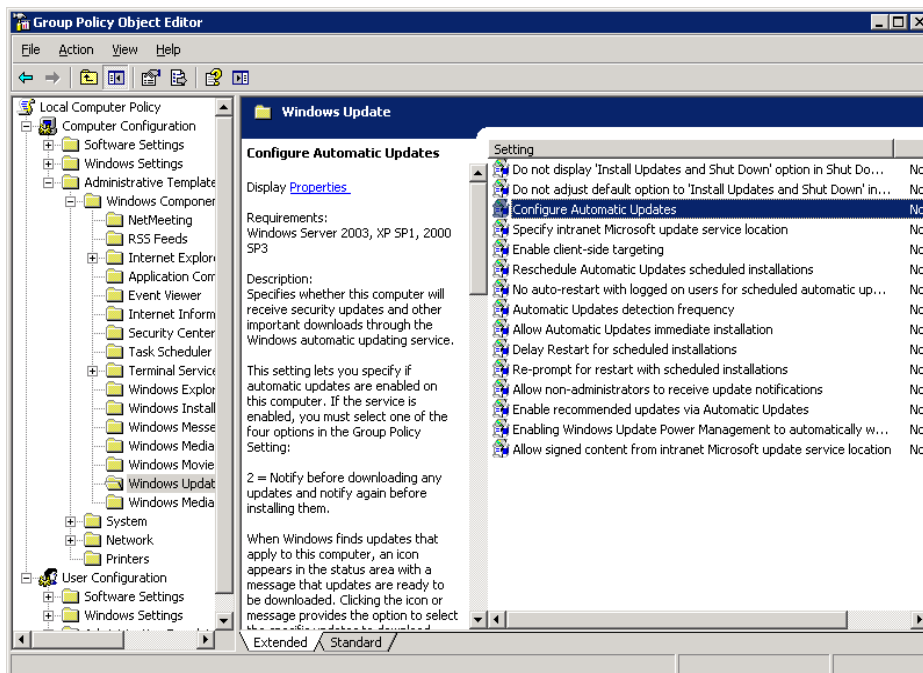


Figure 14 - Group Policy Object Editor

2. In Group Policy Object Editor, drill down the folder location on the left hand side to 'Local Computer Policy |Computer Configuration |Administrative Templates | Windows Components |Windows Update'.
3. In the right hand window double click 'Configure Automatic Updates'.

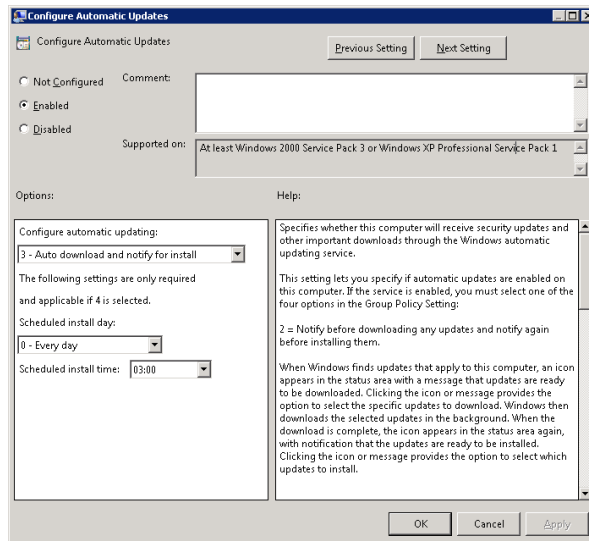


Figure 16 – Configure Automatic Updates

4. Select 'Enabled' radio button, confirm the options are suitable, and click 'Ok'.
5. Next double click 'Specify intranet Microsoft update service location'.

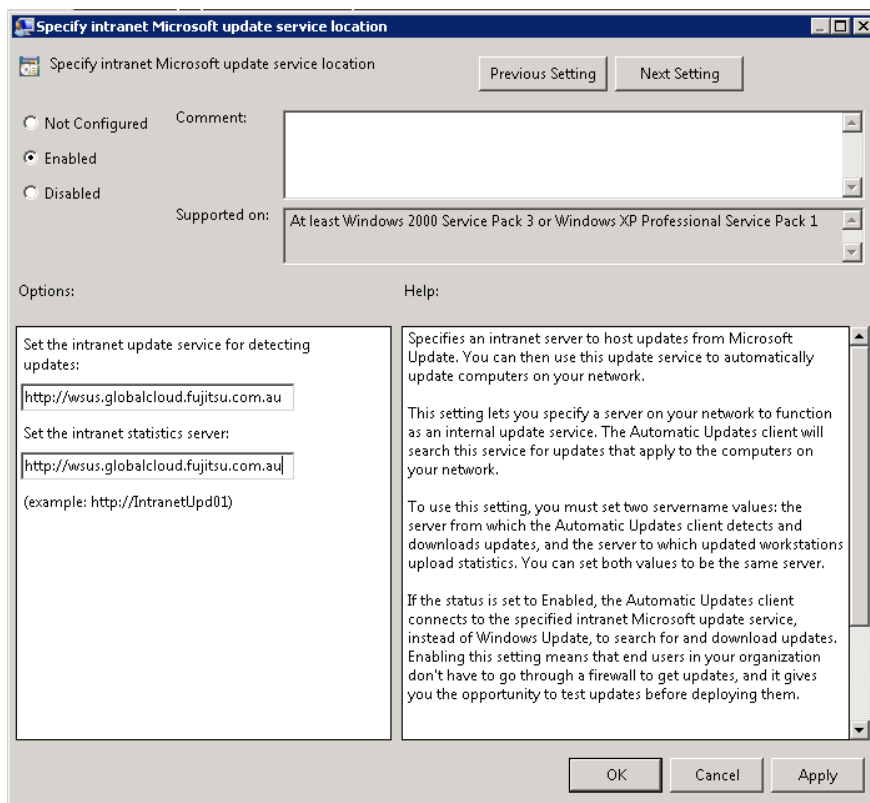


Figure 17 – Specify Intranet Microsoft Update Service Location

6. Select the 'Enabled' radio button, type 'http://wsus.globalcloud.fujitsu.com.au' into the two location boxes and click 'OK'. If Standard DNS has not been configured in the FW settings, please use http://137.172.209.13/
7. Next double click 'No auto-restart with logged on users for scheduled automatic update installations'.

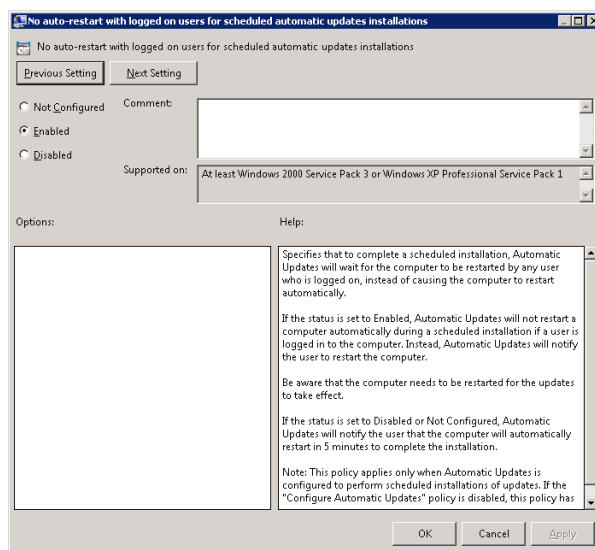


Figure 18 – No Auto Restart

8. Select the 'Enabled' radio button and click 'OK' button

NTP

1. Right click on the time in the lower right hand corner and select 'Adjust Date/Time'
2. Click on 'Internet Time' tab and then click on 'Change settings'
3. On the 'Internet Time Settings' enter the NTP Server IP address as shown below
4. Click 'OK', then go back in and tick 'Update Now'

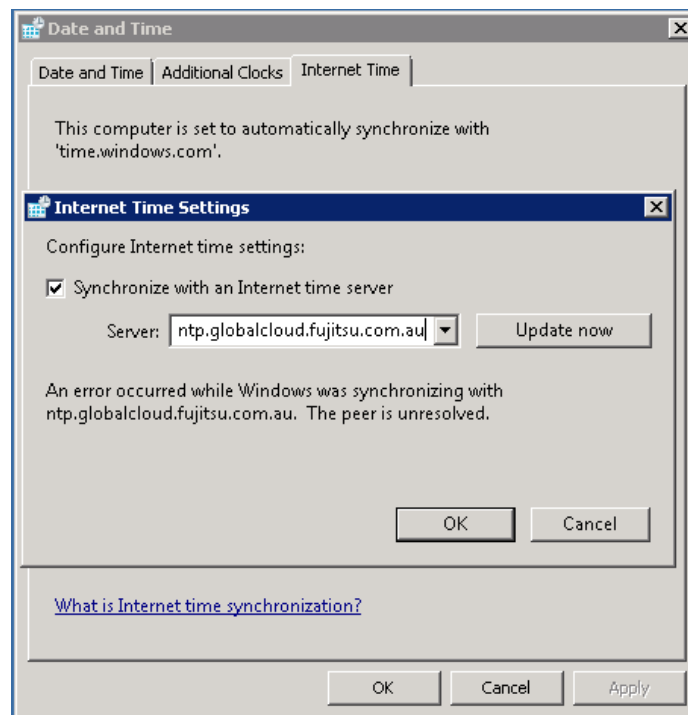


Figure 19 – Configuring VM to use NTP Service

Internet Access (HTTP/HTTPS)

This also requires DNS to be configured (see above)

1. Open IE, answer 'Ask me later' and enter a URL, for example www.google.com
2. Click 'Cancel' to any security prompts, and if Web page loads, Internet access has successfully been established.

KMS

When using a Windows Server 2008 VM, it needs to be activated using the KMS (Key Management Service) server provided by FUJITSU Cloud Service S5 to activate the license.

For more details about KMS authentication, please refer to [KMS User's Guide].

Contact

Fujitsu Global Cloud Team
FUJITSU
E-mail: cloud_gsd@au.fujitsu.com
Website: au.fujitsu.com

All rights reserved, including intellectual property rights.
Technical data subject to modifications and delivery subject to availability. Any liability that the data and illustrations are complete, actual or correct is excluded. Designations may be trademarks and/or copyrights of the respective manufacturer, the use of which by third parties for their own purposes may infringe the rights of such owner.

© Copyright Fujitsu Limited 2012