



FUJITSU Cloud Service S5

Microsoft SharePoint 2010 POC on Windows Server 2008

This guide details steps required to install and configure basic standalone Microsoft SharePoint 2010 on the FUJITSU Cloud Service S5 for proof of concept purposes only.

Benefits of SharePoint 2010 on the FUJITSU Cloud Service S5

FUJITSU Cloud Service S5 provides servers, storage, and network capacity as a service. The service is delivered locally from one of our six tier III datacenters spread around the globe, offering consistent, uptime-based SLA's, data protection, reliability and security, while ensuring that data remains within national borders where required.

For Customers looking to deploy a SharePoint 2010 POC or Development and Test environment, FUJITSU Cloud Service S5 is the ideal start-up infrastructure. Having completed POC activities the FUJITSU Cloud Service S5 is able to offer Enterprise class scalability, reliability, security and performance providing the following tangible benefits:

- CapEx-Free Agility, Elasticity and Scalability
- Rapid Deployment – no need for physical assets and servers
- Simple to Use with Rapid Results
- On Demand - Scale “up and out” or “in and down” as requirements change
- Pay-As-You-Go - Hourly based charge system

Context

This guide is aimed to give the reader an overview of how Microsoft SharePoint 2010 would be installed on the FUJITSU Cloud Service S5 in a proof-of-concept scenario. This is where the objective is to either try something out on the Cloud Service in SharePoint, or show a working proof-of-concept instance of SharePoint 2010 in the Fujitsu Cloud Service. The service provisioned by this document will be a “vanilla” out of the box standalone SharePoint 2010 service that will have all the major features of SharePoint 2010 available for use as standard, but not fully configured. As there are so many possible scenarios for usage of SharePoint 2010 it is then up to the individual to configure SharePoint in a fashion that suits their particular scenario.

Audience

This document is aimed at IT Professionals who wish to provision a baseline SharePoint 2010 service on the FUJITSU Cloud Service S5.

Prerequisites

It is essential that the reader has at least an intermediate level of knowledge in both Windows Server 2008 and SharePoint 2010; skills in SQL Server 2008 and Active Directory are highly desirable but not essential in order to provision the baseline service.

Limitations

The service provisioned by this document is not an Enterprise level service and is only intended to be used for proof of concept purposes and is not intended for either production services or pilot services. No application level resilience is offered by the provisioned service nor is an application level backup service provided either.

Bringing you rapid business benefits

The Fujitsu Information Management practice provides global SharePoint capability with specialists in all areas from infrastructure to services.

- Cloud to On-Premise Integration
- Governance
- SharePoint Exploitation Service
- Security
- Information Architecture
- Design

Our experts can quickly assess your needs to provide you with the right solution and guidance for your individual aspirations. Knowing the strengths and weaknesses of both the cloud and on-premise models we can navigate the technology and business complexities to reach the right result. We can integrate your solutions from on-premise to cloud, cloud enable your existing apps and provide the right governance model that isn't a chore to use. With our help a more agile and coherent IT solution is within reach.

Fujitsu offer a structured approach to exploiting your investment in SharePoint to ensure that you get the best from the tool you are investing in. This approach starts with the business problems you are facing, and looks at your desired outcomes. Through a short Bronze engagement, a results chain is produced to identify how to solve your business problems. This can then be followed by a Silver engagement to turn this into a strategy document that can be used to justify and enhance your investment in the SharePoint platform. A Gold engagement can be requested to turn that strategy into reality.

Work Breakdown Instructions for the deployment of a POC SharePoint 2010 Service on FUJITSU Cloud Service S5

Assumptions

- User Account, Certificate and connectivity to the FUJITSU Cloud Service S5
- Familiarity with the FUJITSU Cloud Service S5 Portal basic configuration and administration tasks
- Familiarity with the FUJITSU Cloud Service S5 Portal System Manager and Design Studio
- Familiarity with the administration of Microsoft SharePoint 2010
- Familiarity with the administration of Microsoft Windows Server 2008

FW Configuration for Outbound Internet Access

Enable outbound connectivity between the DMZ/Secure zones as appropriate to enable Internet connectivity (required to download SharePoint evaluation software).

FROM	TO	ID	Source	Source Port	Target/Service	Target Port	Protocol	Action	Log
DMZ	Internet	45100	any	any	yum	---	---	Accept	On
DMZ	Internet	45200	any	any	DNS	---	---	Accept	On
DMZ	Internet	45300	any	any	NTP	---	---	Accept	On
DMZ	Internet	45400	any	any	any	https(443)	TCP	Accept	On
DMZ	Internet	45500	any	any	any	http(80)	TCP	Accept	On
DMZ	Internet	45600	any	any	any	smtp(25)	TCP	Accept	On

Basic SharePoint Windows 2008 Server configuration

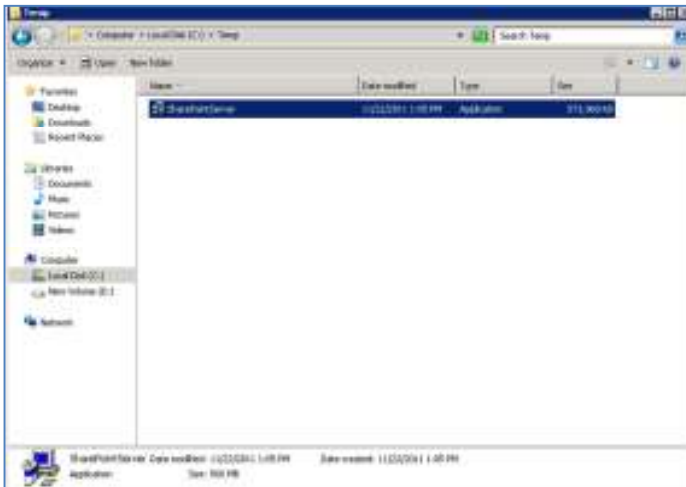
1. Switch On the target server via **System Manager**
2. Establish VPN Connection to the DMZ or Secure 1 as appropriate
3. Establish an RDP Connection with the Server and Login as **Administrator**
4. Press **CTL-ALT-END** and Change Password
5. Select **Start → Control Panel → Network and Internet → Network and Sharing Center**
6. Select **Local Area Connection → Properties**
7. Select **Internet Protocol Version 4(TCP/IPV4) → Properties**
8. Select **Use the following DNS server addresses** and enter the **Preferred DNS Server IP address** (Public IP Address of FW)
9. Click **Close → Close**
10. Click on **Start**, right click on **Computer** and select **Properties**.
11. Select **Change Settings → Change**
12. Type in the Server name, e.g. MOSS-W2K8
13. Click **OK → Close → Close**
14. Restart the computer when prompted.

Download a Trial Version of SharePoint 2010

1. Establish an RDP Connection with the Server and Login as **Administrator**
2. Open Internet Explorer, register and download a Trial copy of SharePoint 2010 by accessing the following link:
<http://www.microsoft.com/download/en/details.aspx?displaylang=en&id=16631>
 For this scenario, a Single Tier, Standalone SharePoint Server 2010 will be utilised

SharePoint 2010 Installation – Single Tier – Standalone – Standard Version

1. Run the downloaded SharePoint installation file:



2. Select **Install software prerequisites** (note that direct Internet access must be available from the server for this stage to work)



3. Select **Next**.



4. Accept the terms of the License Agreements, select **Next**. Note that an Internet Connection must be available from the machine where SharePoint is being installed in order to be able to successfully complete the installation of the pre-requisites.



5. Once the wizard has successfully completed then click **Finish** to close the wizard and return to the main installation screen.



6. Select **Install SharePoint Server**



7. Enter the evaluation Product Key¹ and select **Continue**



¹ Evaluation Keys are obtained by registering for trial versions of Microsoft products

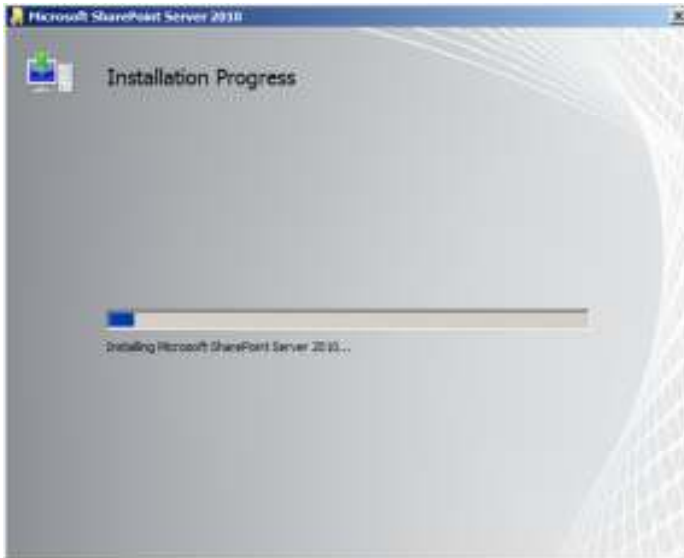
8. Accept the terms of the License Agreements, select **Continue**.



9. Choose to do a **Standalone** installation on the next screen (note that a standalone installation cannot be scaled out in any way).



10. The installation of the SharePoint 2010 binaries will then commence.



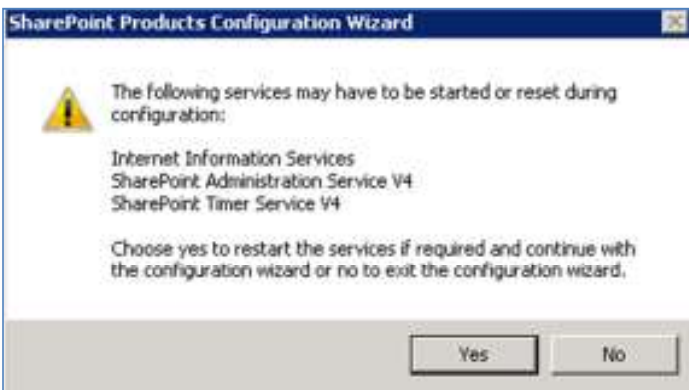
11. Select **Close** to run the **SharePoint Products Configuration Wizard**



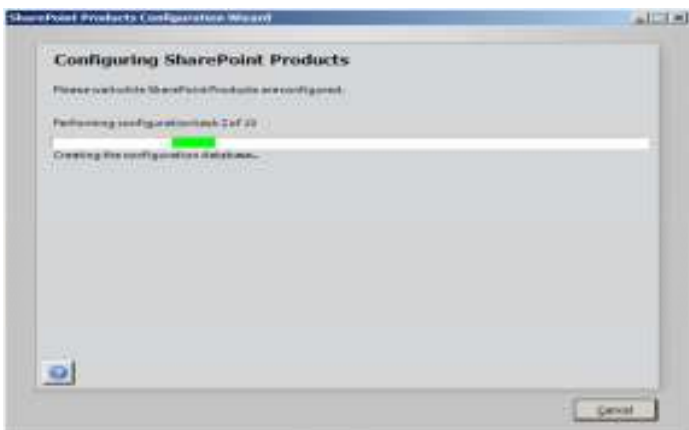
10. Click **Next** to start the SharePoint configuration wizard.



12. Select **Yes** when prompted about restarting services.



13. The wizard will then carry out the necessary configurations to SharePoint.



14. Following installation select **Finish**



15. Internet Explorer will now launch and when redirected to the new SharePoint site, enter valid User Credentials (normally a server administrator should suffice here).
16. You will now be re-directed to the SharePoint Homepage Template Selection dialogue for the new implementation, here you can select a starter site template of your preference that fits a particular scenario.



17. Installation and configuration of basic SharePoint services is now complete. Note that it is highly recommended but not essential to also install both SharePoint Foundation 2010 Service Pack 1 and SharePoint Server 2010 Service Pack 1 after the main installation. Specific Instructions are detailed below for carrying this out if it is desired.
- a) Download a copy of Microsoft SharePoint Foundation 2010 Service Pack 1
<http://www.microsoft.com/download/en/details.aspx?id=26640>
 - b) Download a copy of Microsoft SharePoint Server 2010 Service Pack 1
<http://www.microsoft.com/download/en/details.aspx?id=26623>

- c) Download a copy of Microsoft SharePoint Server 2010 October 2011 Cumulative Update <http://support.microsoft.com/kb/2596505>
- d) Install Microsoft SharePoint Foundation 2010 Service Pack 1 by running the executable downloaded in part a.



- e) Install Microsoft SharePoint Server 2010 Service Pack 1 by running the executable downloaded in part b..



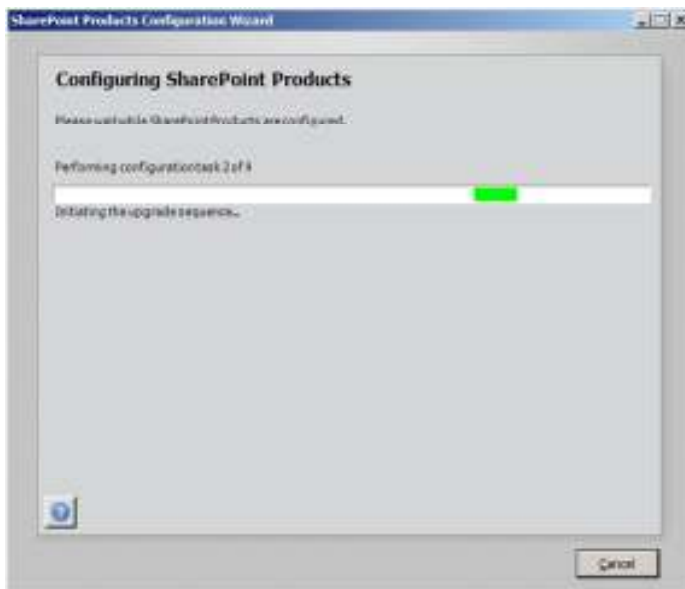
- f) Install Microsoft SharePoint Server 2010 October Cumulative Update by running the executable downloaded in part c.
- g) Next run the SharePoint 2010 Products Configuration Wizard to configure the new service packs.
- h) On the first screen of the wizard click **Next**.



i) Say **Yes** when prompted about restarting services.



j) Allow the wizard to run through the configuration to completion.



k) Once the wizard has completed then click **Finish** to complete the upgrade to SharePoint 2010 Service Pack 1.



Contact

Fujitsu Global Cloud Team
FUJITSU
E-mail: cloud_gsd@au.fujitsu.com
Website: au.fujitsu.com

All rights reserved, including intellectual property rights.
Technical data subject to modifications and delivery subject to availability. Any liability that the data and illustrations are complete, actual or correct is excluded. Designations may be trademarks and/or copyrights of the respective manufacturer, the use of which by third parties for their own purposes may infringe the rights of such owner.

© Copyright Fujitsu Limited 2011