

FUJITSU Cloud Service S5

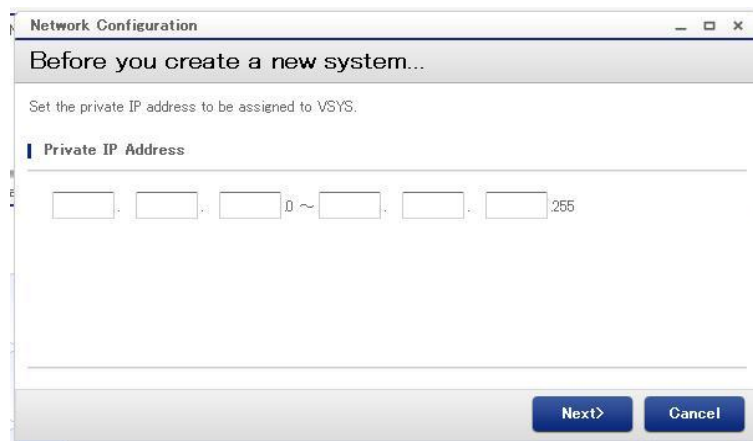
Set & Delete Private IP Address Spaces

This guide describes the process for setting and deleting Private IP Addresses in the FUJITSU Cloud Service S5

How to Set Up a Private IP Address

When Administrators access the System Portal for the first time, they are required to set the Private IP Address range. The following procedure explains how to do this.

1. Configure the IP Address Space

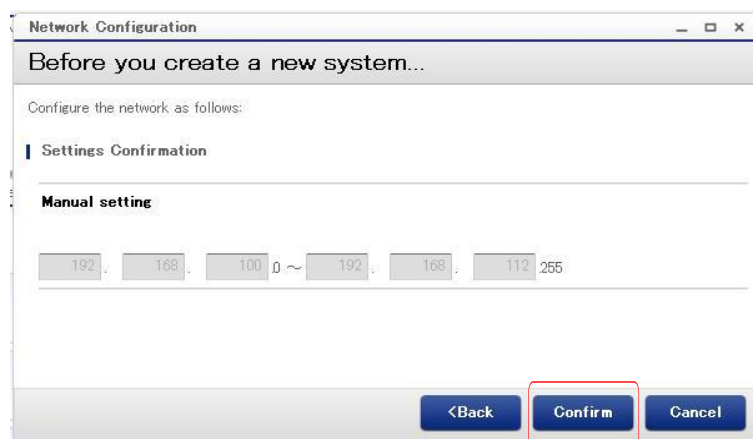


The screenshot shows a window titled "Network Configuration" with a subtitle "Before you create a new system...". Below the subtitle, it says "Set the private IP address to be assigned to VSYS:". Under the heading "Private IP Address", there is a form with six input fields for an IP range: [] . [] . [] 0 ~ [] . [] . [] 255. At the bottom right, there are two buttons: "Next>" and "Cancel".

Figure 1 Setup and Delete Private IP Address Spaces

If there is a connection with an existing Intranet network, the range of Private IP addresses should take the existing IP Addresses into consideration. After the range is set, click the "Next" button.

2. The settings then need to be confirmed.



The screenshot shows the same "Network Configuration" window, now at the "Settings Confirmation" step. It says "Configure the network as follows:". Under the heading "Settings Confirmation", there is a section for "Manual setting" with a form showing a pre-filled IP range: 192 . 168 . 100 0 ~ 192 . 168 . 112 255. At the bottom right, there are three buttons: "<Back", "Confirm", and "Cancel". The "Confirm" button is highlighted with a red rectangle.

Figure 2 Setup and Delete Private IP Address Spaces

3. Check the settings are correct and click the "Confirm" button.

Within the specified range of addresses, one segment range is used as a Network Address (24 bit mask). Since this segment is shared within a contract, only one segment range is used. Therefore, if there is a virtual system with three segments, Users need to specify the range of at least four segments - three segments for the virtual system and one segment for Private IP Address communication

How to Add a Private IP Address Space

1. Select "Network Configuration" at My Portal.

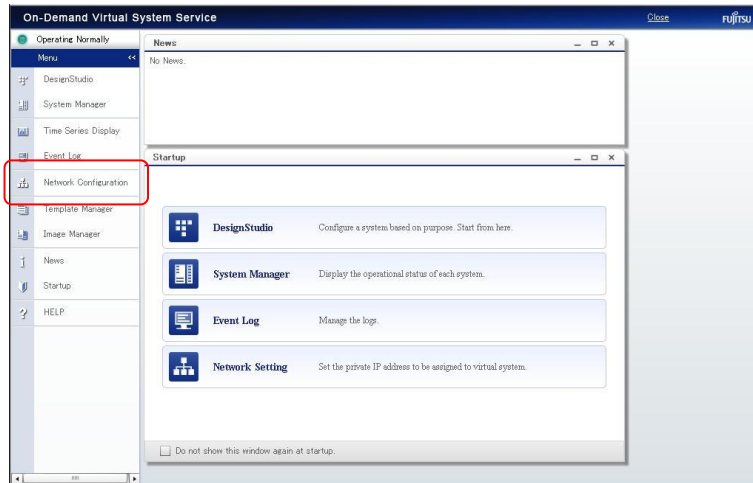


Figure 3 Setup and Delete Private IP Address Spaces

2. Click the "Add" button.

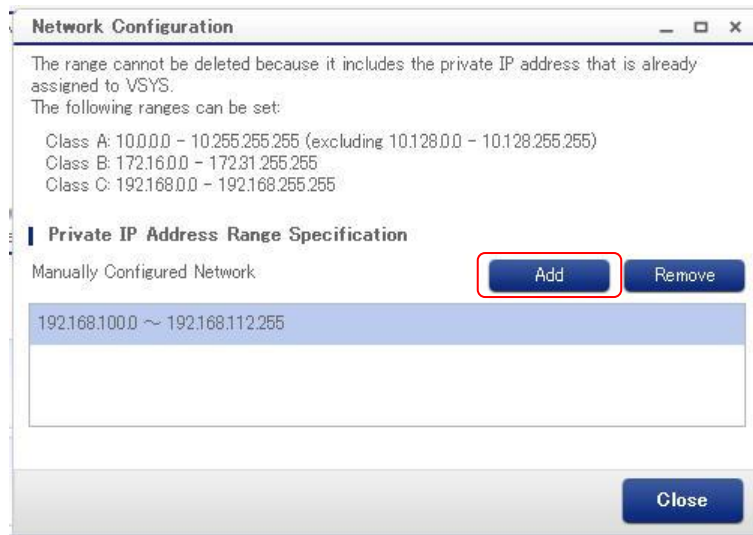


Figure 4 Setup and Delete Private IP Address Spaces

- Specify the Private IP Address range to be added.

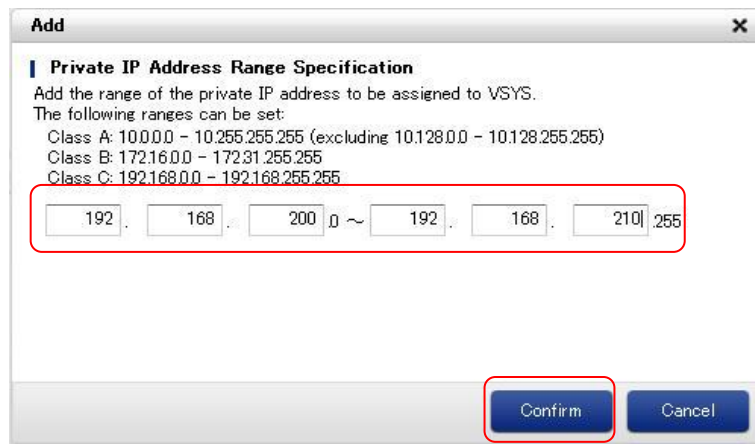


Figure 5 Setup and Delete Private IP Address Spaces

- After entering the IP Address range, click the "Confirm" button.

Note: It is NOT possible to specify overlapping IP Address ranges.

- Complete the addition and click the "OK" button.



Figure 6 Setup and Delete Private IP Address Spaces

A confirmation screen is displayed showing the new Private IP Address Space setting

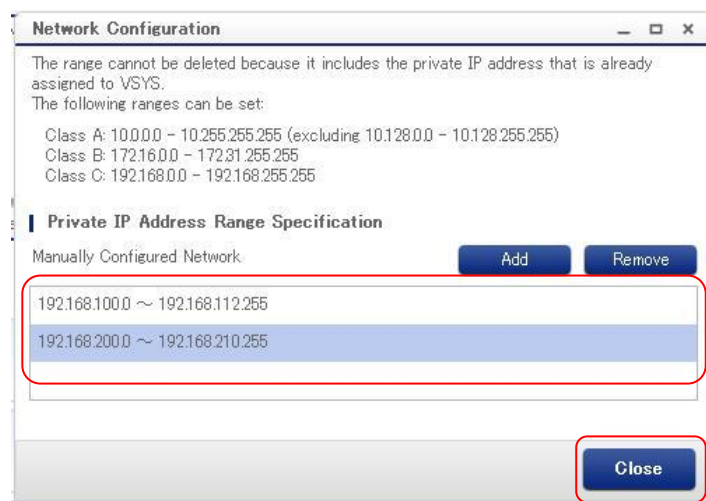


Figure 7 Setup and Delete Private IP Address Spaces

- Click the "Close" button.

How to Delete a Private IP Address Space

1. Select "Network Configuration" at My Portal.

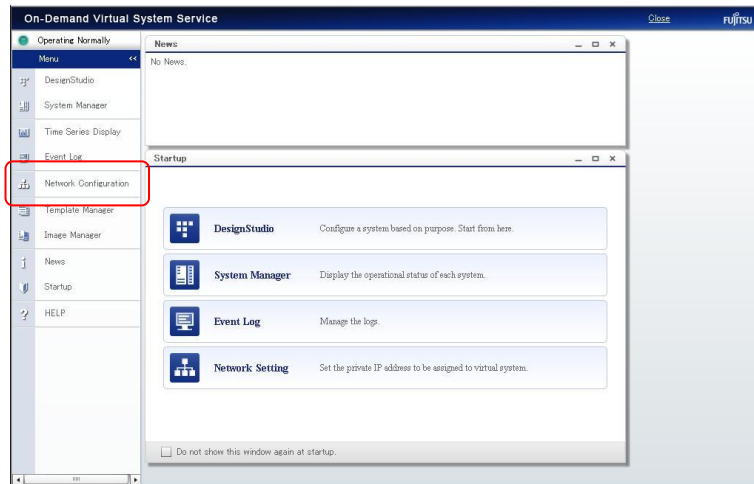


Figure 8 Setup and Delete Private IP Address Spaces

2. Select the Private IP Address range to be deleted.

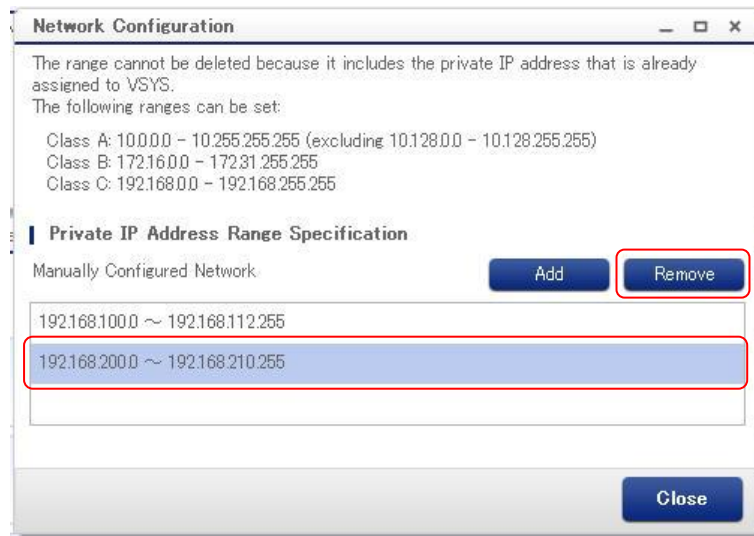


Figure 9 Setup and Delete Private IP Address Spaces

3. After selecting the Private IP Address range, click the "Delete" button.

Note: It is NOT possible to delete a Private IP Address range that contains an IP Address assigned to a VM.

4. Confirm the deletion and click the "Yes" button

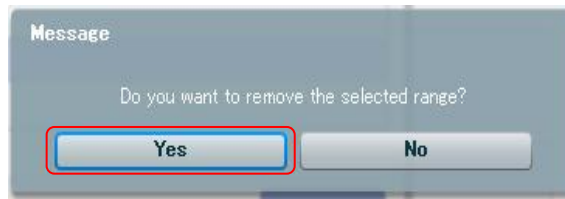


Figure 10 Setup and Delete Private IP Address Spaces

5. On completion, click the "OK" button.

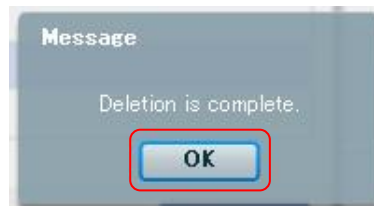


Figure 11 Setup and Delete Private IP Address Spaces

6. A confirmation screen is displayed showing the deletion.

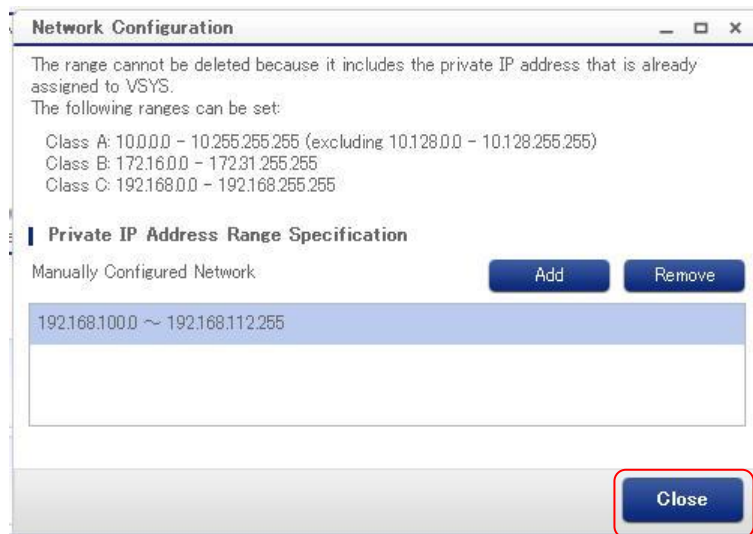


Figure 11 Setup and Delete Private IP Address Spaces

7. Confirm that the deleted IP Address Range has been removed and click the "Close" button.